

ClassicBrand
Cabinetry
Kitchen & Bath Manufacturer

BATHROOMS



FUNDAMENTALS



Cabinet Construction



Stands out from the competition

- Frameless structure
- Interior & exterior finishes match
- Solid maple cabinet doors, drawer fronts & drawers for all stained cabinets
- 3/4" plywood boxes & shelves
- Life time warranty soft-close, adjustable hinges for all standard cabinets
- Dovetail construction for all drawers
- Drawers have full extension, under mount soft-close glides
- Extra layer decorative furniture toe kick

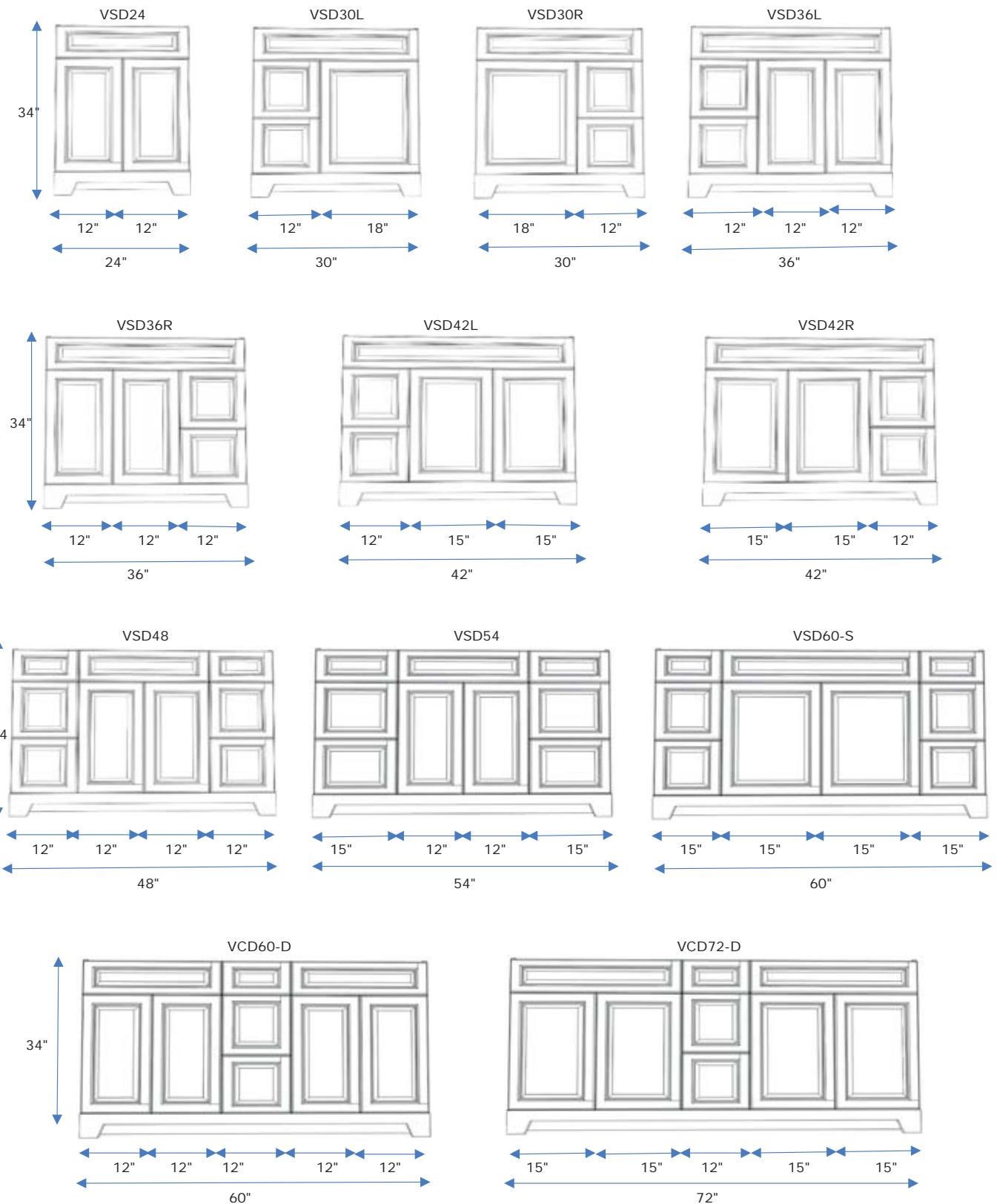
Paints & Stains: We use Akzo Nobel

Plywood: We use Cabinet Grade Plywood which is well known for its easy machinability & screw holding strength. Its strength, uniform plies, thicker face & backing veneer ensure a higher quality finish

Our Mission

To supply Quality products. Always in Fashion.

FUNDAMENTALS Cabinet SKU's & Dimensions VANITIES



Assembly and Delivery

Save time, money and headaches with our fast assembly service fully assembled and packaged.

All cabinets are aligned in our facility on a level surface finished goods are ready to ship to your dealer of choice within 2 business weeks.

Rush deliveries can be accommodated when possible

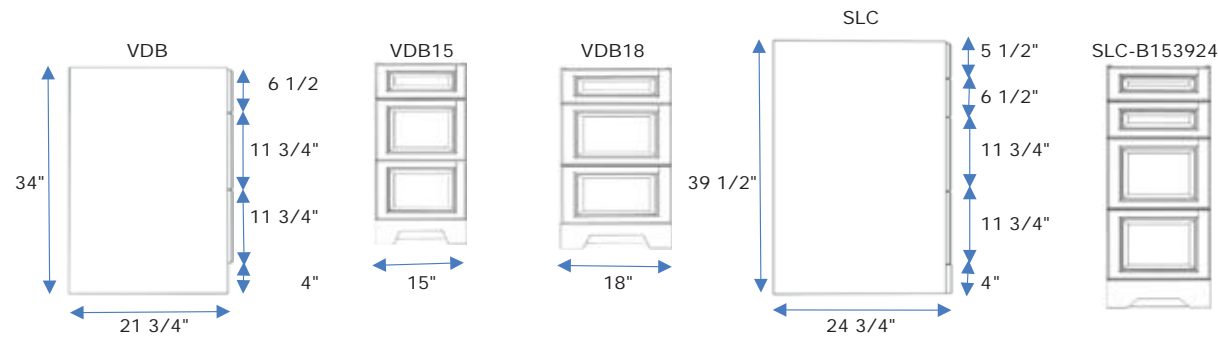
Contact your dealer for assistance



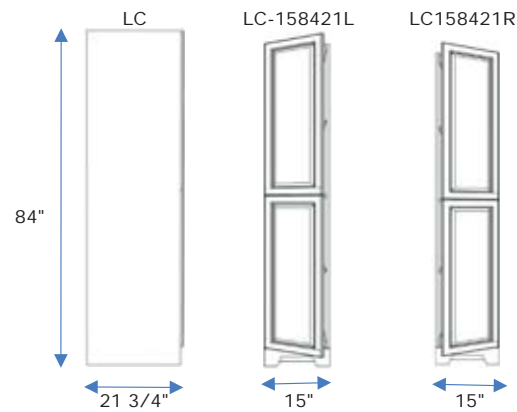
FUNDAMENTALS

Cabinet SKU's & Dimensions

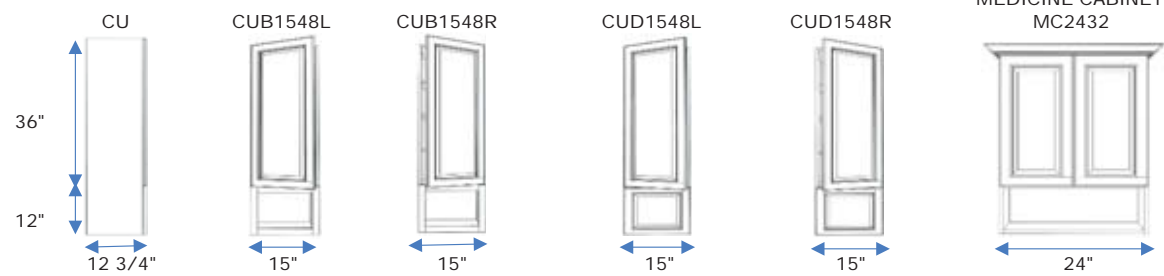
DRAWER BASE CABINETS



LINEN CABINETS



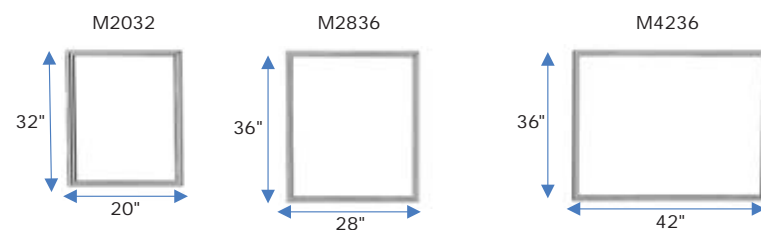
WALL CABINETS



MAKE UP TOP WITH DRAWER 21" Deep



MIRRORS



Vanity Color Palette & Door Style

Step Shaker Door & Drawer Front Style



PAINTED HDF
STEP SHAKER WHITE - (SKU SSW)



STAINED MAPLE WOOD
STEP CHARCOAL GREY - (SKU SCG)



STAINED MAPLE WOOD
STEP GREY - (SKU SG)

FUNDAMENTALS

Vanity Color Palette & Door Style
Beveled Drawer Front & Door Style.



PAINTED HDF
BERMUDA WHITE - (SKU BW)



STAINED MAPLE WOOD
JAVA - (SKU JV)



PAINTED HDF
LONDON FOG - (SKU LF)



PAINTED HDF
MIDNIGHT BLUE - (SKU MB)

Vanity Color Palette & Door Style
Beveled Drawer Front & Door Style.



STAINED MAPLE WOOD
Door Style: Beveled
Door Color: Riverstone



STAINED MAPLE WOOD
Door Style: Beveled
Door Color: Sandstone

Handles & Knobs

KNOBS



K02
Brushed Nickel



K03C
Polished Chrome



K04
Polished Nickel



K03
Brushed Nickel



K05
Brushed Nickel



K05C
Polished Chrome



K05G
Satin Matte Gold



K08B
Satin Matte Black

HANDLES



H02
Brushed Nickel



H03
Brushed Nickel



H04
Polished Nickel



H08B
Satin Matte Black



H05
Brushed Nickel



H05C
Polished Chrome



H05G
Satin Matte Gold

IMPORTANT: H02, H04 & H08B will fit 12" drawers
For vanity sizes 30", 36", 42", 48", 60" double and 72" double

Step Shaker White



Step shaker door and drawer styles are a new twist on the conventional shaker style. This elegant and contemporary design will give a timeless beauty with a modern look

Step Shaker White



Step Shaker White



Step Shaker White



Bermuda White



Bevelled door and drawer fronts in a beautiful white finish an elegant and contemporary design. Timeless beauty with an updated modern look

Bermuda White



Bermuda White



Step Charcoal Grey



Step Charcoal Grey doors and drawers feature beautiful solid maplewood in a dark grey stain that shows the natural grain and variations of the wood

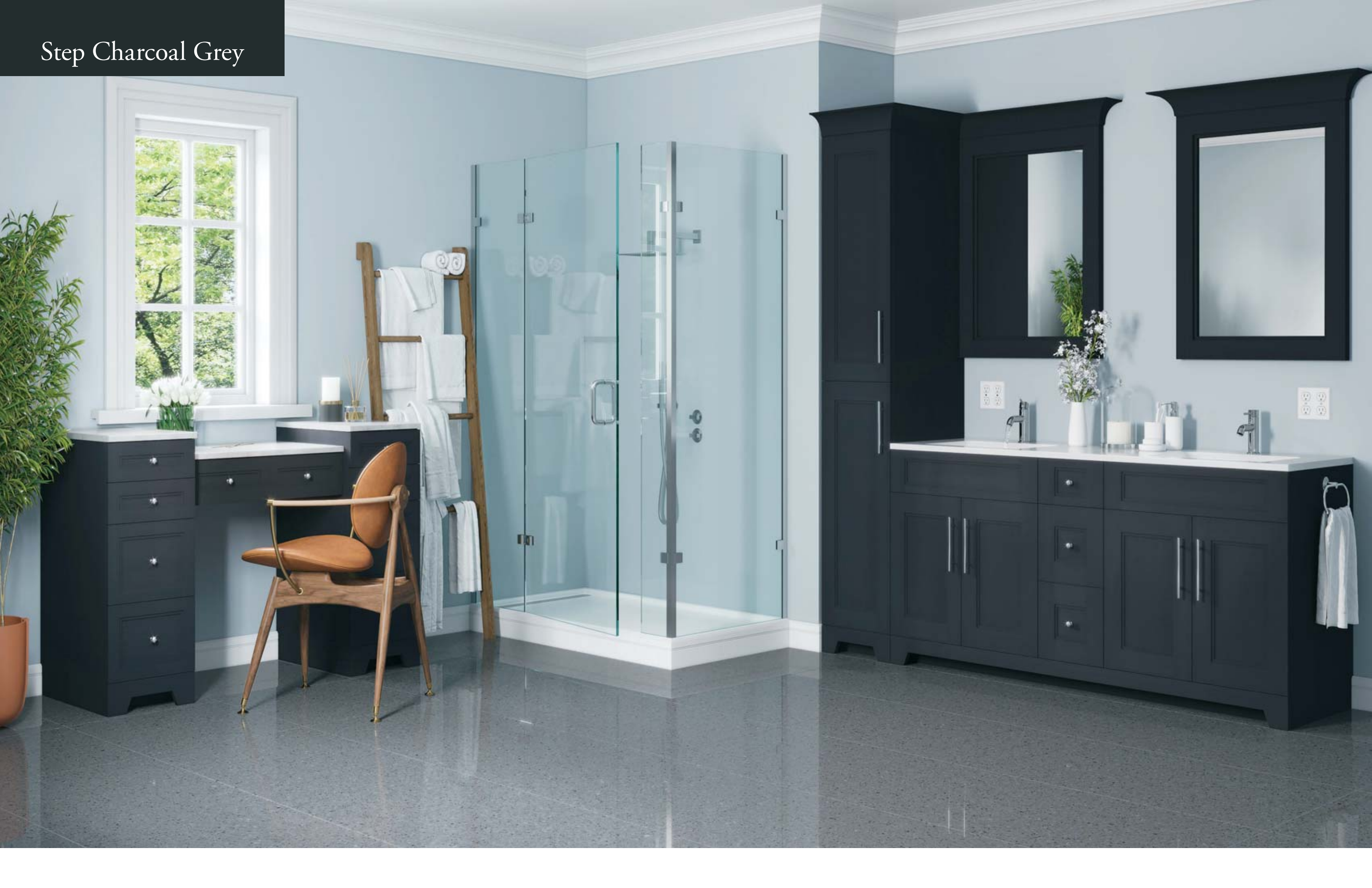


Step Charcoal Grey

Step Charcoal Grey



Step Charcoal Grey



Step Charcoal Grey



Step Grey



Step grey doors and drawers feature beautiful solid maplewood in a washed grey stain that shows the natural grain and variations of the wood



Step Grey



Step Grey



London Fog



London fog doors & drawer fronts feature a bevelled edge beautifully finished in a painted mid grey tone



London Fog



London Fog





Riverstone features beveled door and drawer fronts beautiful solid maplewood doors and drawer fronts stained to show the natural grain & variations of wood

RIVERSTONE



Riverstone



Midnight Blue



Midnight blue doors & drawer fronts feature a bevelled edge beautifully finished in a painted dark blue tone



Midnight Blue

Midnight Blue



Midnight Blue



Java



Java features beveled door and drawer fronts beautiful solid maplewood doors and drawer fronts stained to show the natural grain & variations of wood



Java

Java



Java





Sandstone features beveled door and drawer fronts beautiful solid maplewood doors and drawer fronts stained to show the natural grain & variations of wood



SANDSTONE

Sandstone



Sandstone



Countertops

2cm Premium Quartz



ARCTIC GLACIER

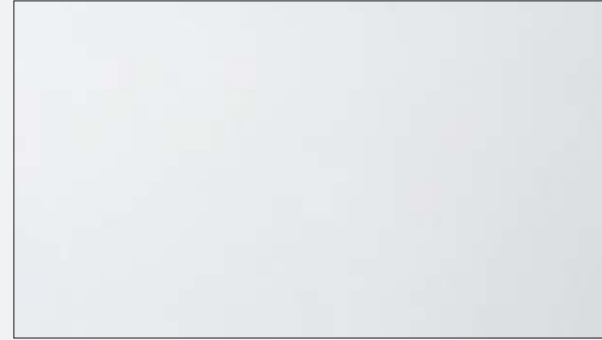


CLOUD WHITE



MIST

2cm Premium Quartz



PURE WHITE



SMOKEY HAZE



WHISPER



FUSION

2cm Regular Quartz



STARLIGHT

3cm Premium Quartz



LAVA GREY

Countertop Warranty & Care/Maintenance

Regular & Premium Quartz

How It's Made: Quartz countertops are man-made engineered stone countertops formed by combining 90% ground quartz (a natural hard mineral) with 8-10% resins, polymers, and pigments. This forms a very hard granite-like surface. The appearance depends on how the quartz is ground: coarsely ground quartz produces a flecked appearance, while finely ground quartz produces a smooth look.

Properties: Extremely hard and durable; glossy sheen; non-porous and stain-and-crack resistant; does not require sealing or resealing; wide range of colors; easy to clean with mild soap, water, and a soft cloth.

A coated surface may need professional repair. Unfortunately, large cracks, chips and breaks cannot be repaired, even by a professional.

Maintenance & Cleaning for Quartz Countertops

1. Use a recommended cleaner. (See recommended products below)
2. Spread the cleaner on the counter and use a soft damp cloth (think: microfiber or chamois, not any type of scrubber) to wipe down the entire cultured marble/artificial marble countertop.
3. Most importantly, you should never use anything abrasive on a cultured marble/artificial marble countertop—such as steel wool, colored scrubbers, or anything else to scrub out a stains. These can all damage countertops in a matter of seconds.

Cleaning Products That Are Safe To Use on Quartz Countertops

Gel Gloss Kitchen & Bath Polish and Cleaner Liquid or Aerosol Spray, Method Daily Granite, Stone Pro Marble Products,

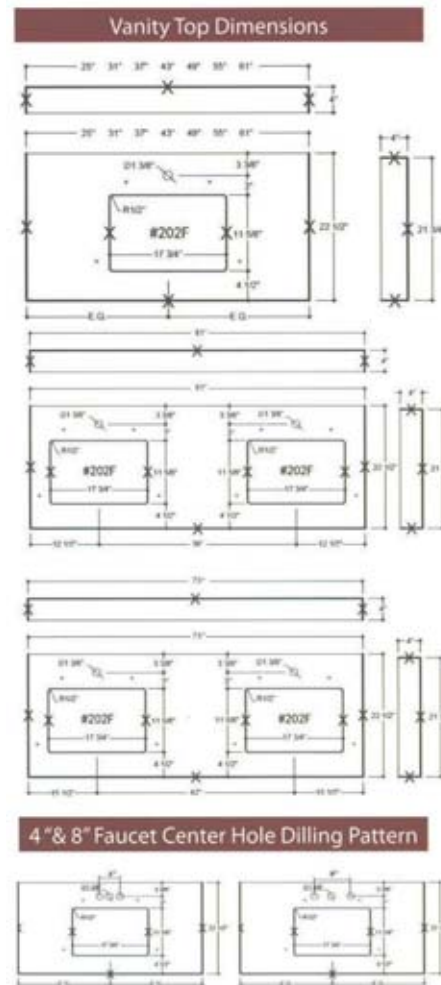
Mothers California Gold Polish

Hard Water can stain countertops too. You should never leave water on your countertop in any form: water drops, water rings from the bottom of a glass, etc. Instead, you should wipe up water on your countertop using a soft cloth.

Technically, the dull finish that most people experience with Cultured Marble & Marble countertops is called “etching”

Quartz and Artificial Marble tops are a mixture of natural and man-made materials. There will be variances in veining, colour and grain pattern between the top you get and the small sample in the store or the pictures in this catalogue.

Hard water spots are caused by minerals in the water. Some municipalities have very hard water and this has been known to cause spotting. Drying the tops after using them will go a long way in avoiding water spots in the future.



Cabinet Care and Maintenance

With proper care, your cabinetry will provide a lifetime of use and satisfaction. Proper care includes providing a wood friendly environment. Many of the internal environmental issues that affect human comfort, also contribute to a wood healthy environment. Specifically, controlled temperature and humidity with minimal changes from day to day and season to season will ensure your comfort and they will ensure the stability and life of your wood cabinetry.

Moisture

Repeated short term exposure to excessive moisture such as splashing of surfaces from a sink or even a single longer term event such as flooding, WILL result in irreversible damage to wood cabinetry. Steam, from cook tops, crock pots and improperly sealed dishwasher doors, can cause problems as well. Moisture should be wiped from surfaces immediately, to minimize damage.

If wood has a chance to absorb excess moisture, efforts should be made to dry out the wood including substrates, immediately. A void direct high heat, use fans and dehumidifiers, moisture absorbing cloth and compounds.

Immediate attention reduces the amount of damage and also reduces the likelihood of mold and mildew.

Humidity

Wood expands as humidity increases and shrinks as humidity decreases. Solid wood will dimensionally change more across the grain than with the grain.

As wood expands (swells) and contracts with changes in humidity, the finish at the joints will crack.

This cracking is universal but is much more evident on light colored paint than on stains or dark paints.

Regardless, this is the nature of product made from wood and not a reason for replacement.

Where humidity exposure is uneven, pieces may warp, cup or bow.

Often, if the humidity level is returned to a normal level & maintained for a period of time, these issues will disappear.

Extremely dry conditions can result in wood parts splitting and /or cracking in addition to shrinkage as described above.

The optimal humidity level is 40% to 55% relative humidity. Extreme conditions (lower than 20% or higher than 80%) especially need to be avoided.

While most focus is on too damp or too humid conditions, too dry conditions can be equally damaging to cabinetry.

Extreme dry conditions can lead to cracking in solid wood components.

Under dry conditions, the insert panels in panel doors will shrink and the panel edges will be exposed.

The exposed, unfinished panel edges will not match the finished surface of the rest of the panel and door.

This is not a reason for replacement but is instead an indication that humidity levels are too low and need to be remedied.

Temperature

Temperature variation can cause some of the same problems as humidity variation and the two are often interrelated.

Temperature increases, cause materials to expand. Temperature decreases cause materials to contract or shrink.

Sudden temperature changes cause more dramatic material changes. More likely to lead to cracking and splitting in solid wood. More likely to lead to warping, cupping and bowing in any wood components.

Maintenance

Use dehumidifiers and/or air conditioners in summer to control excess humidity. Use a humidifier to keep the air from becoming too dry in winter. Maintain climate control during the off season of vacation homes to reduce the risk of damage.

Prior to installation do not store cabinets in a garage, basement or other unheated or unconditioned space.

Treat your cabinets like any fine piece of wood furniture and you will enjoy their beauty and natural look for many years.

Remember, preventative maintenance is the best form of maintenance.